

C&C CarWorx Corp. 400 Market Ind. Park • #19 Wappingers Falls, NY 12590 • USA 1-888-CAR-WORX (227-9679)

SUBARU FORESTER 2009 - Part# 18011138/438/118/418

FIX SIDE STEPS / MONTAJE ESTRIBERAS
/ MARCHE PIEDS



2		M8	8		M10x35	2		M8x25	2		M8x25	2		2		2
4		M8din9021	8		M10	2		M8	2		M8din9021	2		2		2
2		M8	8		M10	2		M8	2		M8	2		2		2
2		D25xd13xH7	16		M10	4		M8	2		M8	2		2		2

GREEN POINT = PASSENGER SIDE* *** POINT VERT INDIQUE CÔTE DROIT *** *** PUNTO VERDE = LADO DERECHO ***
*** RED POINT = DRIVER SIDE** *** POINT ROUGE INDIQUE CÔTE GAUCHE ***** PUNTO ROJO = LADO IZQUIERDO ***

Keep your Romik accesories clean. To prevent corrosion and to maintain your high quality finish, wax or polish regularly with quality stainless polish. Use a non abrasive type automotive wax. Any use of abrasive soaps, polishes or waxes can be detrimental to the finish.

For additional installation assistance please call customer service **610-395-5540**

ROMIK Inc. 7350 William Avenue - Allentown, PA 18106

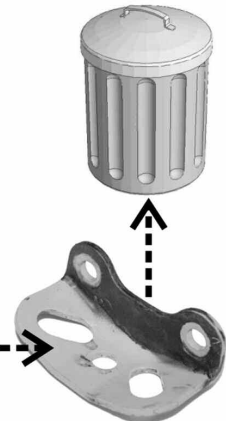
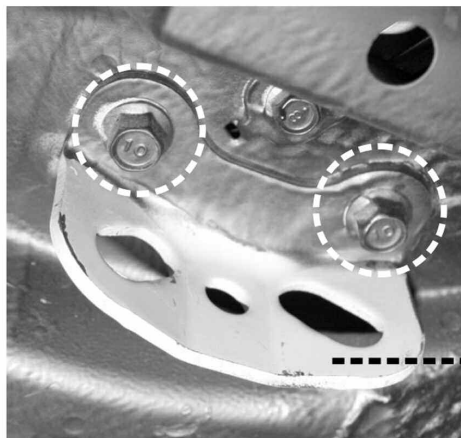
www.romik-usa.com



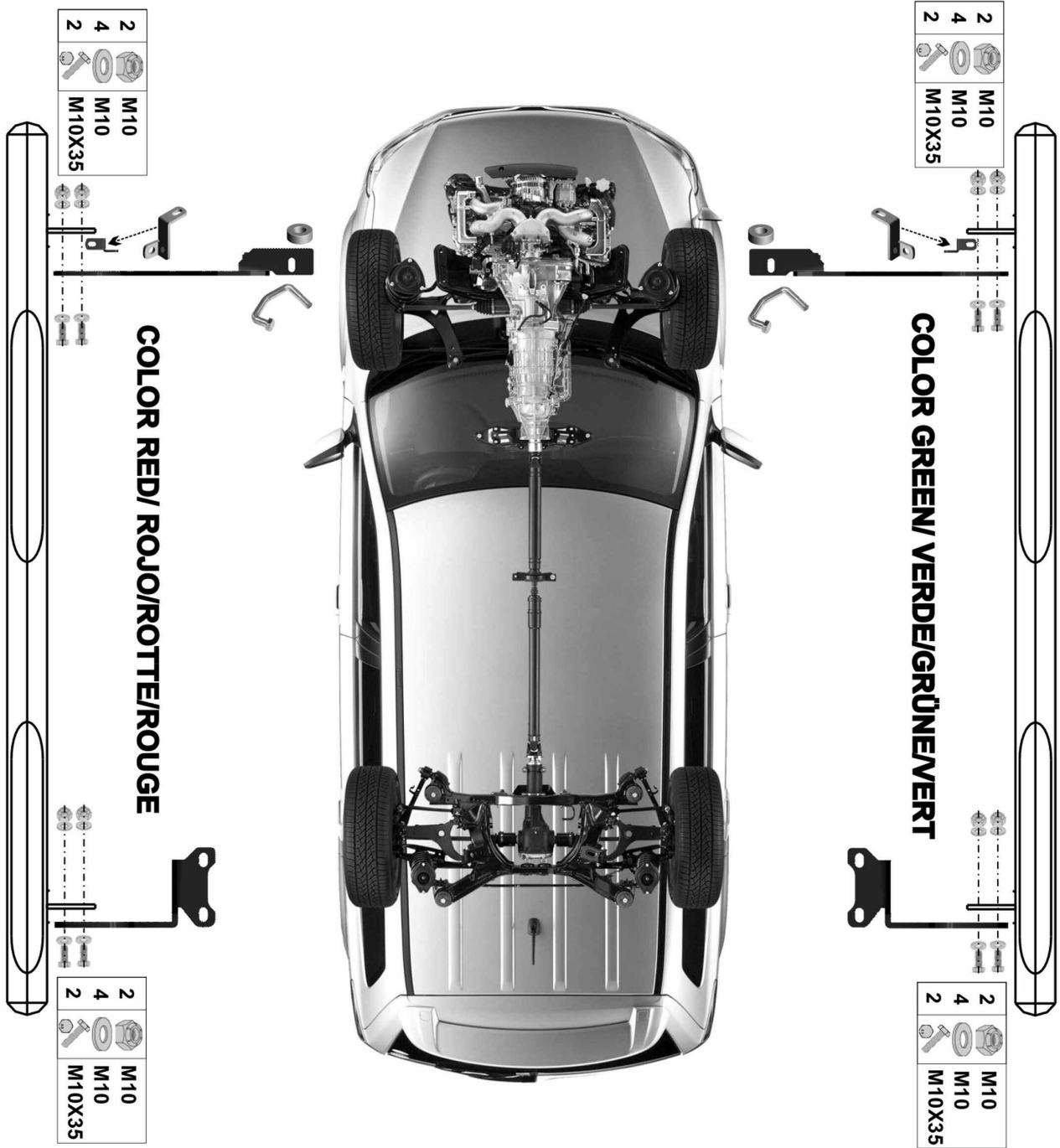
1



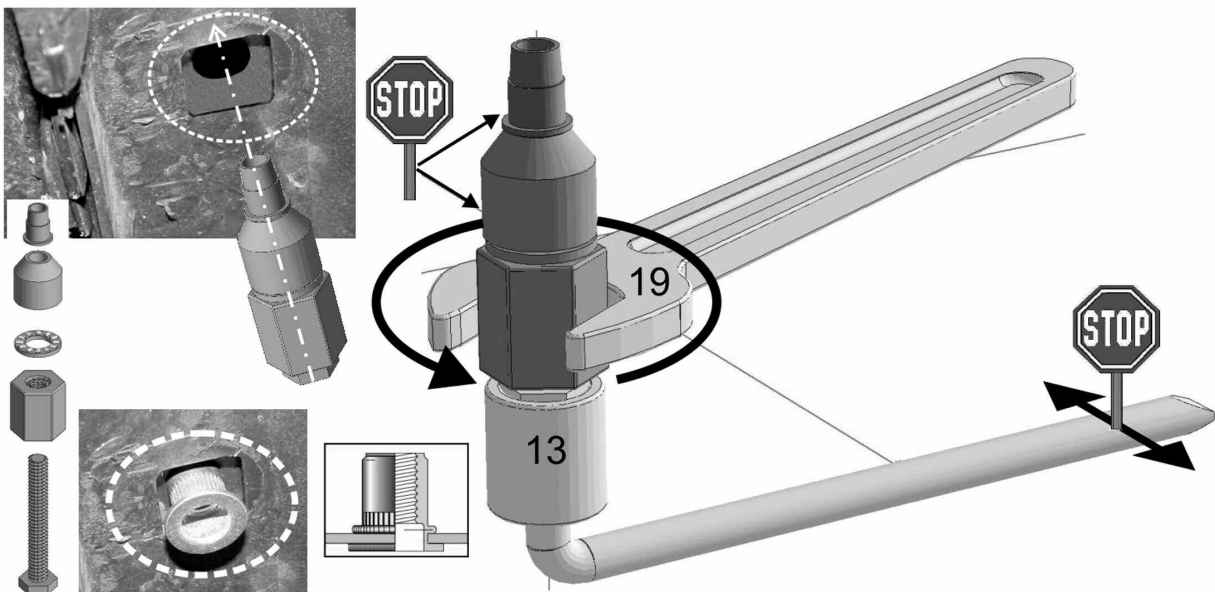
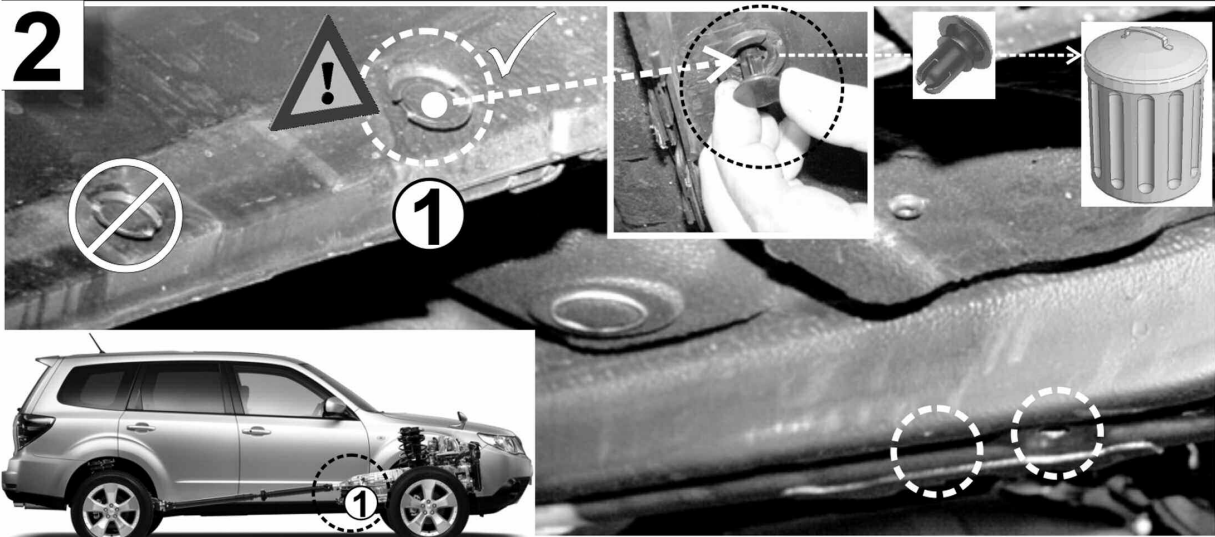
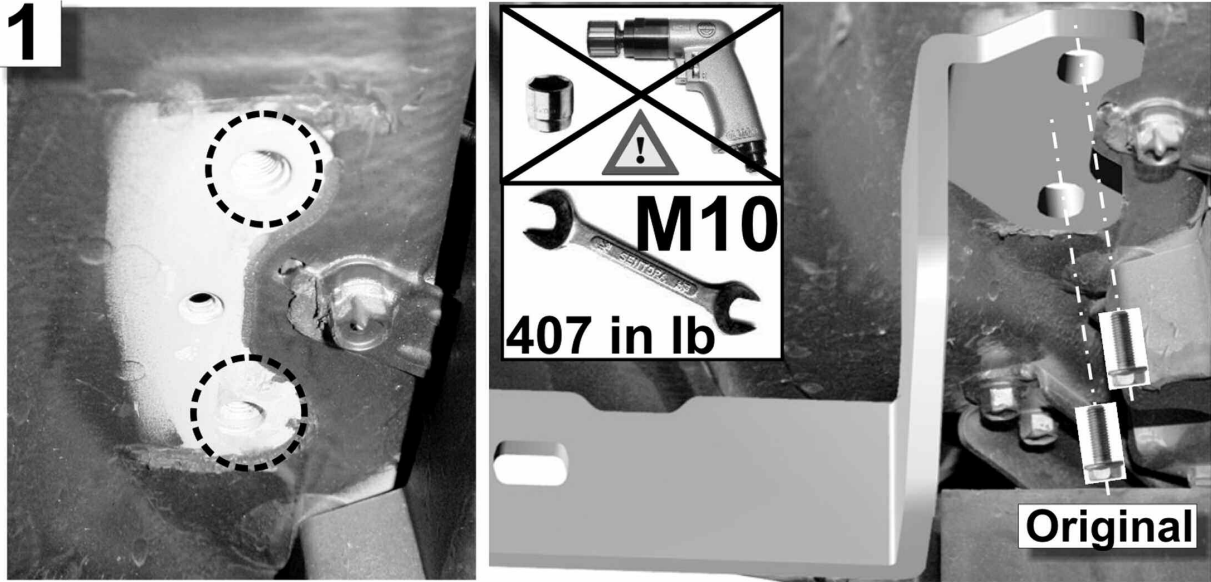
REAR



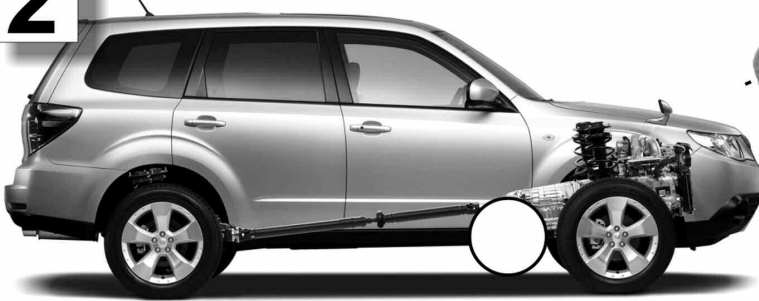
2



1



2



FRONT

